



Fast Load Pump Head



Model No.: UD15
Flow Rate :
0.08-930mL/min

Product Features

UD15 pump head, compact design, embedded design. There is water-proof groove in the pump head mounting side. Colorful cover, fit for different instruments. Good rigidity, high precision. Transparent protecting cover, easily to observe the working situation of pump head and tubing. Can use stepper motor, DC motor and AC motor.

Typical Application

For analytical instruments,
For environment instruments.

Technical Specifications

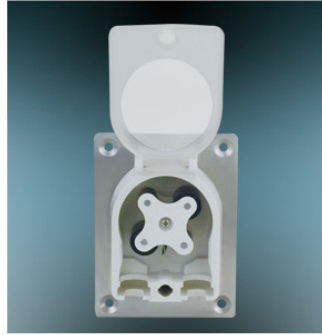
Model No.	Housing Material		Tubing		Speed Range(rpm)	Flow Rate(mL/min)	Weight(kg)
	Body	Protective cover	Tubing Size	ID×Wall thickness			
UD15 (2 rollers)	PSF	Transparent PC	16#	3.1×1.6(mm)	0.1-350	0.08~280	0.12
			25#	4.8×1.6(mm)		0.16~580	
			17#	6.4×1.6(mm)		0.26~930	



Tubing Installation



1. As below picture, turn the holding pin to unlocking position.



2. Open the transparent cover.



3. Install the tubing.



4. Close the transparent cover, and turn the holding pin to unlocking position.

Dimension Drawing (Unit:mm)

